



# SPRRING

S I O L I M

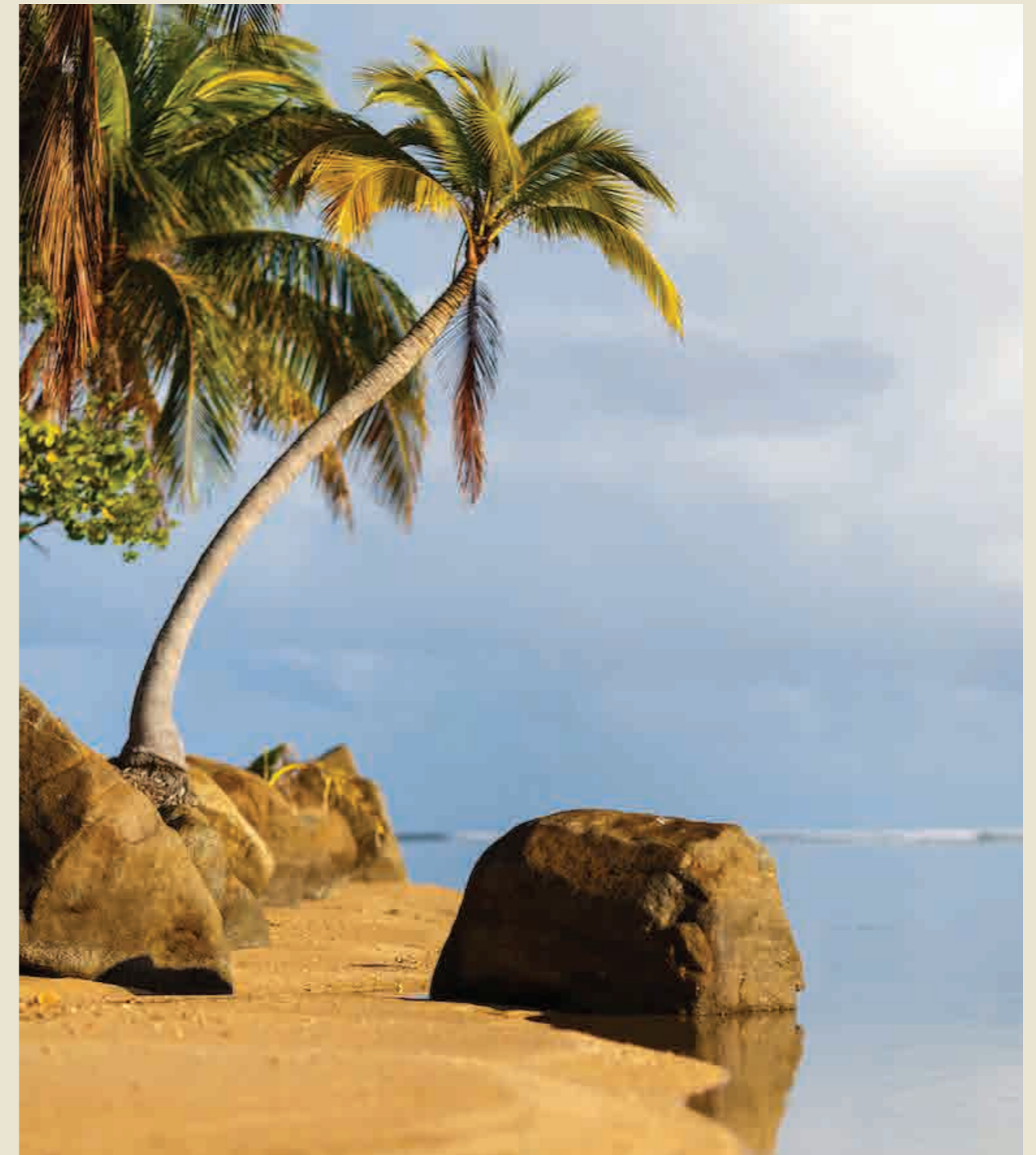


AVTARA  
HOMES



MMIRARI





# ABOUT GOA

---

SUB-TITLE

The paradise state of Goa is one that is associated with tourism and vacationing. But, living in Goa is the complete opposite of this. This beautiful and bountiful state is home to a unique and distinct culture, its wonderfully welcoming people, a thriving natural environment and a stunning coastline, all of which come together to provide the setting for a fulfilled healthier life with fewer woes and a plethora of enriching experiences.



# LOCATION

---

Siolim is a picturesque village in North Goa that boasts of dreamy winding roads lined by old, tall, shady trees, and a beautiful blend of traditional and modern homes. Centrally located in the district of North Goa, this historic village is perfectly close to Goa's gorgeous coastline, its growing vibrant nightlife, and its quintessential dining experiences which are now being hailed the best in the country. Add to this the ideal proximity to local markets for fresh produce and seafood and all the amenities one may ever need, and you have the perfect spot in all of North Goa to enjoy a life of everything you've dreamed of in your new AVTARA home.

# LOCATION MAP



New Goa International  
Airport (Mopa)  
**24 KMS**

Goa International  
Airport (Dabolim)  
**43.6 KMS**

Candolim  
Beach  
**12.1 KMS**

Baga  
Beach  
**8.8 KMS**

Anjuna  
Beach  
**6.9 KMS**

Vagator  
Beach  
**3.9 KMS**

Arhambol  
Beach  
**14.7 KMS**

Morjim  
Beach  
**8.1 KMS**

Assagao  
**4.9 KMS**



SPRRING



01



SPRING



01



# SPRRING LIFESTYLE

---

Spring is always a reminder of rebirth and renewal with all the life blooming around us during the season. At SPRRING, this feeling is exactly what we plan to make last all year round. Our design, architecture, landscaping, location and facilities are all tailored to make you experience that spring feeling while you live your new life here in your new home. Designed in the Tropical Modernist style, all our villas are built with premium brand fittings, flooring and furnishing. Natural contours and existing greenery on the land are consciously preserved while designing SPRRING which creates a seamless blend between the outdoors and indoors making life here a beautiful balance. We also offer Rental Management, Property Management and Housekeeping services on demand if you may ever have the need.









SPRING



# SITE PLAN





# SITE PLAN



# VILLA C

## BASEMENT





# VILLA C

## GROUND & FIRST FLOOR



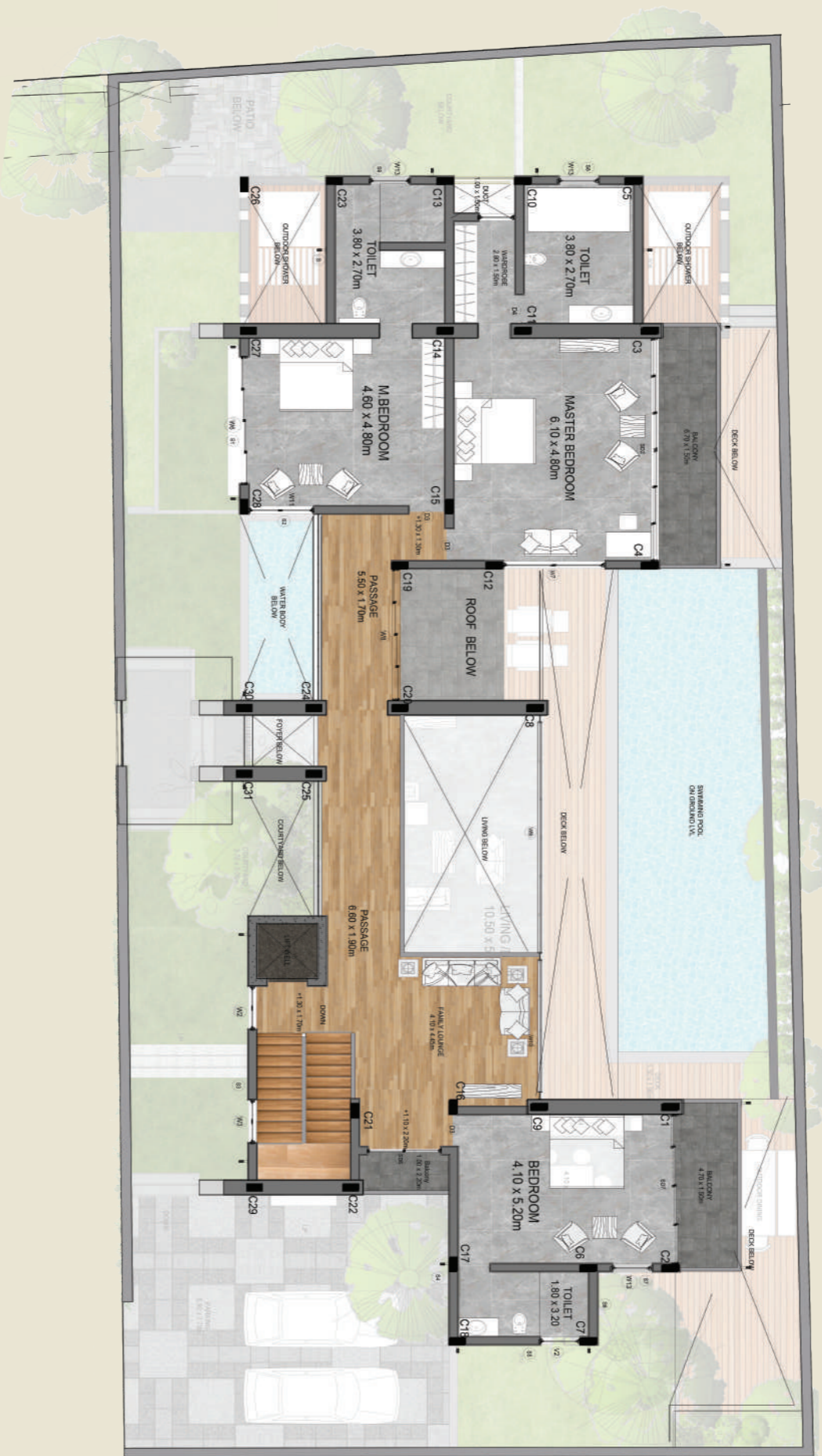
# VILLA D

## BASEMENT



# VILLA AD

## GROUND & FIRST FLOOR









DISCLAIMER: All the plans, layouts and Interior depicted in this brochure are tentative and subject to change without prior notice. These are purely conceptual and constitute no legal offerings. RERA number to be mentioned on the last page.

# SPECIFICATIONS

RCC framed structure

Random rubble basalt masonry walls

Laterite stone walls

Shingle roofing

Hardwood false ceiling

Kohler or equivalent plumbing fixtures

Finolex plumbing pipes

Teak doors

Top grade aluminium windows

Limestone flooring in living, dining and bedrooms

Hardwood flooring in family room and staircase

Ceramic tiles in kitchen dado and bathroom walls

Limestone flooring in bathrooms

Granite flooring in shower areas

Granite counters

Granite cobblestones for external paving

Venetian lime plaster for internal walls

Asian Paints Apex Paint for external plastered walls

Porcelain tiles for swimming pool

Hardwood Decking for swimming pool

Asian Paints Epoxy Paint for steel work

Kitchens by IFB

Schindler Elevators

Daikin or equivalent Air-Conditioning

Finolex Electrical wires

Legrand Switches

# AMENITIES & SERVICES

---

Private Pool

---

Private Gardens

---

Outdoor Dining Area

---

WiFi

---

CCTV

---

Security Staff

---

DG Power Backup

---

Concierge Service

---

Pool Maintenance team



## SERVICES ON DEMAND:

---

Property Management services

---

Rental Management services

---

Housekeeping services

---

On-call Culinary services





# ABOUT US

---

This project SPRRING is being jointly developed by AVTARA HOMES and MMIRARI. AVTARA, derived from Sanskrit, meaning incarnation or manifestation. We at Avtara Homes believe in the manifestation of ideal residential spaces that are a true representation of your perfect happy home. We develop homes that are deeply private and personal, and an embodiment of everything you desire in your idyllic space leaving you wanting for nothing more and nothing less.

Our promise of high standards of quality in architecture and design is thoughtfully delivered with every project we develop. Be it infrastructure, materials, fixtures, amenities or locations, our vision comes through in a marvelous blend of comfort and luxury. At AVTARA, we don't just build your home, we build your sanctuary.

Established in 2010, Mmirari is one of Goa's finest real estate developers, known for its luxury developments. Seven residential and two hospitality hotel projects have been successfully developed by the group in Goa. Mmirari, which means "Miracle" in Portuguese has been conceived, to build all our projects under one umbrella. Mmirari is synonymous with luxury, design and quality.



## CONTACT DETAILS

AVTARA HOMES

+91 9810118778 | [sales@avtara.in](mailto:sales@avtara.in) | [info@mmirari.co.in](mailto:info@mmirari.co.in)

[www.avtara.in](http://www.avtara.in)

CIN Number: U45200DL2012PTC233718

Date of Printing: 22 February, 2023